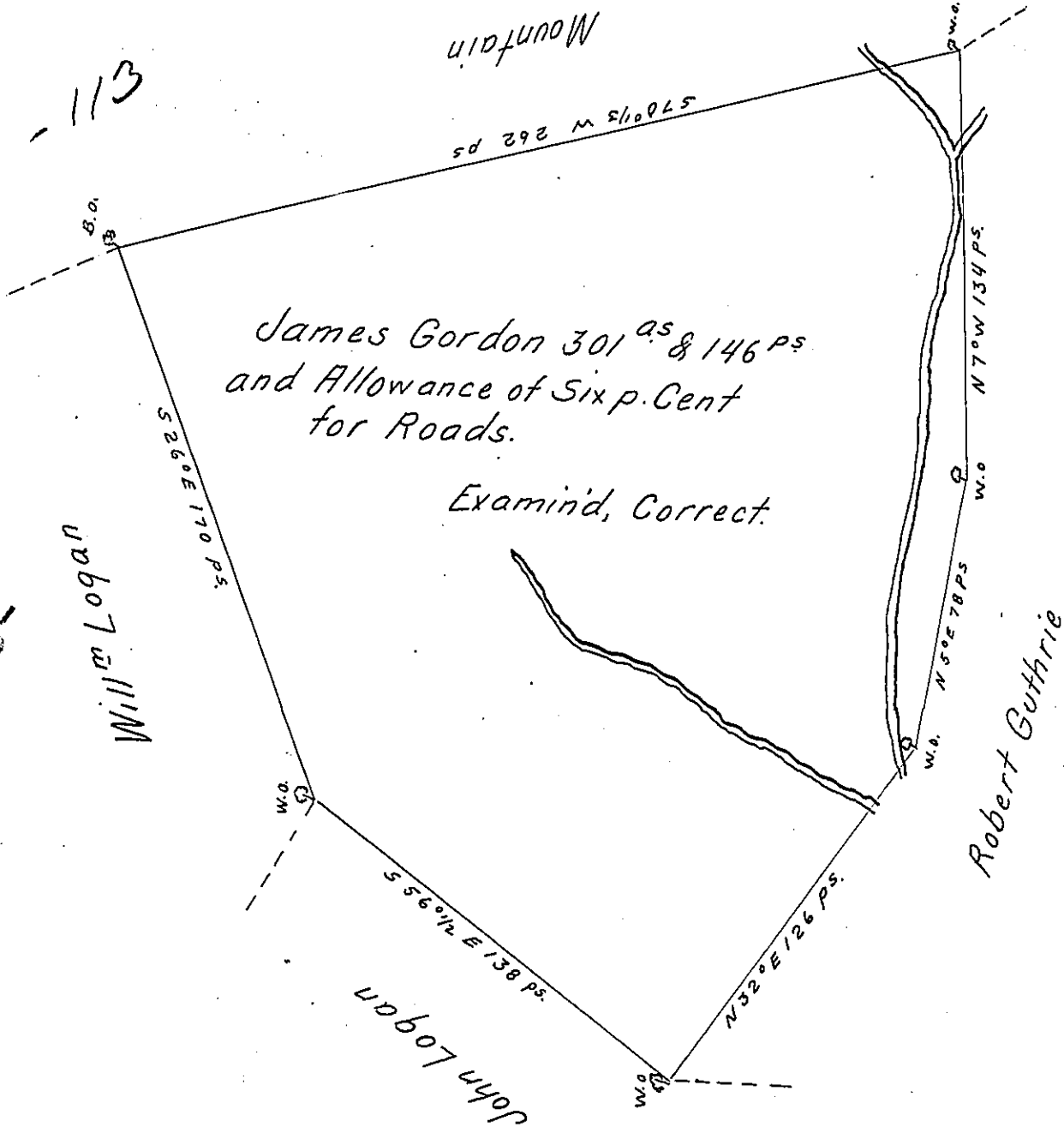


P-1-66

Mountain

04-113

0-113-101



James Gordon 301^{as} & 146 ps
and Allowance of Six p. Cent
for Roads.

Examind, Correct.

A Draught of a Tract of Land Situate in West Pennsborrow Township
in Cumberland County Containing three Hundred and one Acres and
one Hundred and forty Six perches and the Usual Allowance of Six p.
Cent for Roads. Surveyed for James Gordon the 10th Day of March
1764 in pursuance of a Warrant from the Honourable the Proprie-
taries Bearing Date February the Eighth Day Anno Domini 1763.

To John Lukens Esq.
Surveyor General

John Armstrong
D.S.

IN TESTIMONY that the above is a copy of the original remaining on file in
the Department of Internal Affairs of Pennsylvania, made
conformably to an Act of Assembly approved the 16th day of
February, 1833, I have hereunto set my Hand and caused
the Seal of said Department to be affixed at Harrisburg,
this ninth day of November 1904.

Loach R. Brown
Secretary of Internal Affairs.